

# M101M4 Standard Accessories



## Adapter and Power Cord

- 100~240 V<sub>AC</sub> to 12 V<sub>DC</sub> / 3 A
- Country specific power cords available
- Part Nr.: 922D036W12V6



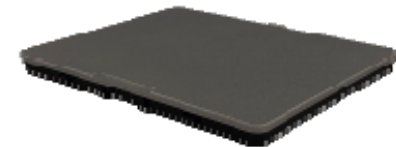
## Capacitive Stylus

- Greater precision with fine-tip point
- Secure with tether design
- 93 x 7 mm (length x diameter)
- Model / Part Nr.: CTS-V1 / 9B000000001D



## Standard Battery

- 7,4 V<sub>DC</sub> / min. 5100 mAh Li-Polymer Battery, 2S1P
- Dimensions: 153 x 122 x 11 mm
- Weight: 276 g
- Model / Part Nr.: BS101 / 98K000A0003R



# M101M4 Optional Accessories

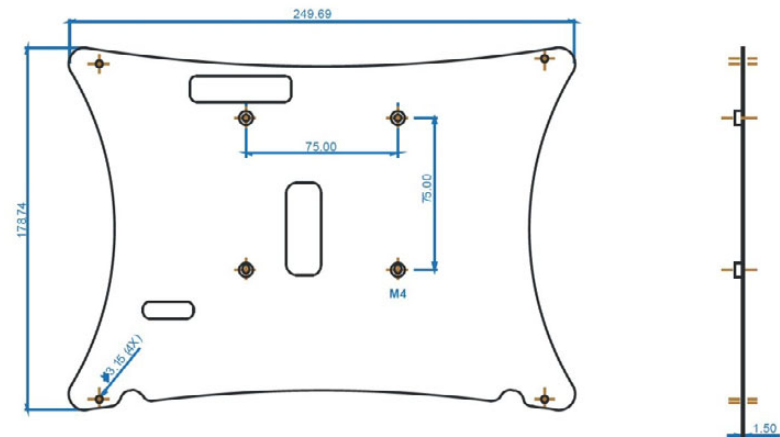
## VESA Mounting Kit

- 75 x 75 mm VESA Mount
- Slim design
- Material: metal
- Screws incl.
- Model / Part Nr.: VS-M101 / 98K000A0003O



## Battery Charger

- Dual-bay charging station
- Supports up to 3 sets of dock interconnected
- Power level LED and buzzer
- Charging time BS101: 3 h
- Charging time BL101: 6 h
- 184 x 94 x 34 mm (1 x dual-bay)
- Model / Part Nr.: BC-M101 / 98KT00A0000F



# M101M4 Optional Accessories

## Desk Docking

- Easy to charge
- USB 2.0 × 4 (rear × 2, side × 2)
- LAN (10/100) / RS-232
- 12 V<sub>DC</sub> input (DC jack)
- optional 9~36 V<sub>DC</sub> (3-pin terminal block)
- Model / Part Nr.: DD-M101M4 / 98K000A00052



## Vehicle Docking

- VESA 75 × 75 mm mounting support
- USB 2.0 × 4 (rear × 2, bottom × 2)
- RS-232
- 9~36 V<sub>DC</sub> input (3-pin terminal block)
- Easy one hand docking / undocking
- Anti-theft design with key lockable cradle
- IP52 design (rain proof)
- Vibration resistant: MIL STD 810G, 5~500 Hz, 2,24 G
- Model / Part Nr.: VD-M101M4 / 98K000A00051



# M101M4 Optional Accessories

## Shoulder Strap

- Fixed with screws + hooks
- Adjustable cross-body strap
- 3,3 cm x 85~165 cm
- Pad 6 x 20 cm
- Model / Part Nr.: SS-M101 / 98K000A0003Q



## Hand Strap

- Fixed with screws
- Adjustable for both battery sizes
- Model / Part Nr.: HS-M101 / 98K000A0003J



## Carry Bag

- Hand Carrier
- Shoulder Strap
- Separated accessories pocket
- Model / Part Nr.: CB-M101 / 9B000000003J

